

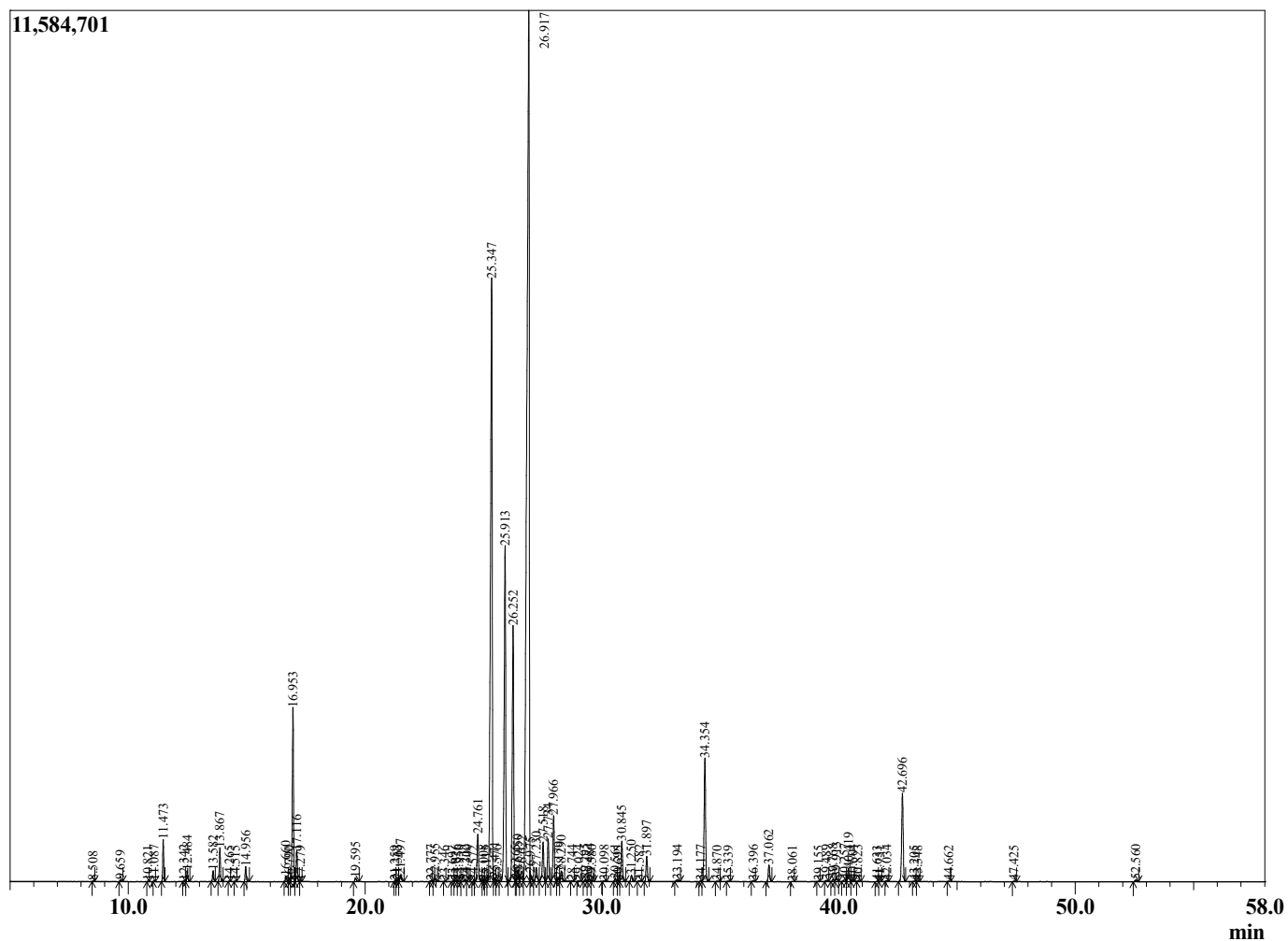
Sample Information

Sample Type : Essential Oil
 Sample Name : Mentha arvensis
 Injection Volume : 0.10

Cornmint
 Lot# IDW14-WH
 Country: India



Chromatogram Mentha arvensis



R.Time	Name	Area%
8.508	Hexanol	0.01
9.659	2,5-Diethyltetrahydrofuran	0.03
10.821	Hashishene	0.01
11.087	alpha-Thujene	0.01
11.473	alpha-Pinene	0.78
12.342	Camphene	0.01
12.484	3-Methylcyclohexanone	0.22
13.582	Sabinene	0.23
13.867	beta-Pinene	0.70
14.265	para-Menth-3-ene	0.01
14.515	Myrcene	0.01
14.956	3-Octanol	0.32
16.660	para-Cymene	0.11
16.790	Methyl octyl ether	0.00
16.953	Limonene	3.86
17.116	1,8-cineole	0.66
17.279	Benzyl alcohol	0.01
19.595	1-Octanol	0.10
21.259	Unidentified	0.01
21.363	Tetrahydromyrcenol	0.03
21.497	Linalool	0.19
22.777	alpha-Fenchol	0.02
22.955	trans-para-Mentha-2,8-dienol	0.06
23.346	Unidentified	0.01
23.697	cis-Limonene oxide	0.01
23.826	Unidentified	0.03
23.956	cis-para-Mentha-2,8-dien-1-ol	0.02
24.212	trans-Pinocarveol	0.06
24.300	Unidentified	0.02
24.572	trans-Verbenol	0.01
24.761	Isopulegol	1.30
25.008	Unidentified	0.02
25.115	Unidentified	0.01
25.347	Menthone	19.53
25.471	para-Menthan-4-ol	0.09
25.576	trans-Pinocamphone	0.03
25.913	Isomenthone	9.26
26.252	Neomenthol	6.86
26.365	Isoborneol	0.02
26.450	1-Nonanol	0.32
26.622	trans-Isopulegone	0.42
26.917	Menthol	40.06
26.975	Terpinen-4-ol	0.18
27.230	Unidentified	0.42
27.518	Isomenthol	1.11
27.734	Neoisomenthol	1.08
27.966	alpha-Terpineol	1.69
28.179	3-Decanol	0.10
28.290	trans-Isopiperitenol analogue	0.30
28.744	Verbenone	0.02
29.024	Unidentified	0.02
29.295	Unidentified	0.06
29.484	cis-Isopiperitenol analogue	0.07
29.580	Unidentified	0.02
30.098	Citronellol	0.01
30.561	Unidentified	0.06

R.Time	Name	Area%
30.695	Unidentified	0.01
30.845	Pulegone	1.06
31.250	Carvone	0.16
31.582	Carvotanacetone	0.03
31.897	Piperitone	0.65
33.194	1-Decanol	0.06
34.177	Unidentified	0.02
34.354	Menthyl acetate	3.42
34.870	Unidentified	0.02
35.339	Unidentified	0.01
36.396	Elemene isomer	0.02
37.062	delta-Elemene	0.46
38.061	Unidentified	0.01
39.155	Unidentified	0.01
39.489	alpha-Ylangene	0.03
39.768	Longicyclene	0.06
39.913	alpha-Copaene	0.11
40.257	Unidentified	0.06
40.419	beta-Bourbonene	0.38
40.604	alpha-Bourbonene	0.03
40.823	beta-Elemene	0.02
41.633	Cyperene	0.01
41.751	Unidentified	0.01
42.034	Longifolene	0.02
42.696	beta-Caryophyllene	2.60
43.205	Unidentified	0.01
43.348	beta-Copaene	0.01
44.662	Unidentified	0.01
47.425	Bicyclogermacrene	0.02
52.560	Caryophyllene oxide	0.06
		100.00